



Tender Advertisement

Project Title

Construction of Coal Briquette Plant

Introduction

JITEGEMEE HOLDINGS CO LTD, a leading coal mining company, invites experienced and qualified contractors to participate in the tender for the construction of a Coal Briquette Plant in Songea, Ruvuma. This project marks a significant milestone in our commitment to sustainable energy solutions and community development.

Project Overview

The Coal Briquette Plant will be a vital addition to our operations, enabling the conversion of coal into efficient and environmentally friendly briquettes. The plant's strategic location in Songea, Ruvuma, ensures proximity to our coal mining sites, facilitating streamlined production and distribution processes.

Scope of Work

The selected contractor will be responsible for:

- Design and engineering of the Coal Briquette Plant
- Construction of plant infrastructure including buildings and installation of necessary equipment and machinery
- Compliance with safety, environmental, and quality standards
- Timely completion and handover of the project as per agreed specifications.

Qualification Requirements

Interested contractors must demonstrate:

- Proven experience in industrial construction projects, preferably in the energy sector
- Expertise in briquette production technologies and process optimization
- Financial stability and ability to undertake a project of this scale
- Compliance with regulatory requirements and adherence to international standards
- Strong track record of delivering projects on time and within budget.

For any inquiries

 info@jitegemeeholdings.co.tz

 +255763189804

 Songea, Ruvuma



Tender Advertisement

Submission Guidelines

- Interested contractors are invited to obtain briquette diagram Layout at our website.
- All submissions must be sent via our official email info@jitegemeeholdings.co.tz
- The deadline for submission is 19/4/2024 around 10:00 AM
- Late submissions will not be considered.

Important Note:

JITEGEMEE HOLDINGS CO LTD reserves the right to accept or reject any or all submissions without assigning any reason thereof. The decision of the selection committee will be final.

Join us in this transformative project that promises to revolutionize coal utilization while contributing to sustainable development goals. Together, let's build a brighter and greener future.

Thank you for your interest and participation.

For any inquiries

 info@jitegemeeholdings.co.tz

 +255763189804

 Songea, Ruvuma

Tender Advertisement

Project Title: Construction of Coal Briquette Plant

Company: JITEGEMEE HOLDINGS CO LTD

Location: Songea, Ruvuma

Introduction:

JITEGEMEE HOLDINGS CO LTD, a leading coal mining company, invites experienced and qualified contractors to participate in the tender for the construction of a Coal Briquette Plant in Songea, Ruvuma. This project marks a significant milestone in our commitment to sustainable energy solutions and community development.

Project Overview:

The Coal Briquette Plant will be a vital addition to our operations, enabling the conversion of coal into efficient and environmentally friendly briquettes. The plant's strategic location in Songea, Ruvuma, ensures proximity to our coal mining sites, facilitating streamlined production and distribution processes.

Scope of Work:

The selected contractor will be responsible for:

1. Design and engineering of the Coal Briquette Plant.
2. Construction of plant infrastructure including buildings and installation of necessary equipment and machinery.
3. Compliance with safety, environmental, and quality standards.
4. Timely completion and handover of the project as per agreed specifications.

Qualification Requirements:

Interested contractors must demonstrate:

1. Proven experience in industrial construction projects, preferably in the energy sector.
2. Expertise in briquette production technologies and process optimization.
3. Financial stability and ability to undertake a project of this scale.
4. Compliance with regulatory requirements and adherence to international standards.
5. Strong track record of delivering projects on time and within budget.

Submission Guidelines:

1. Interested contractors are invited to obtain briquette diagram Layout at our website.
2. All submissions must be sent via our official email info@jitegemeeholdings.co.tz
3. The deadline for submission is 19/4/2024 around 10:00 AM
4. Late submissions will not be considered.

Contact Information:

For any inquiries

info@jitegemeeholdings.co.tz,

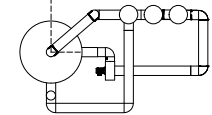
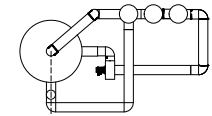
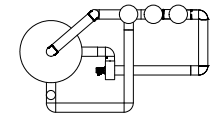
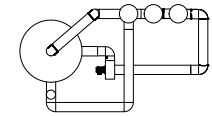
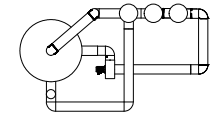
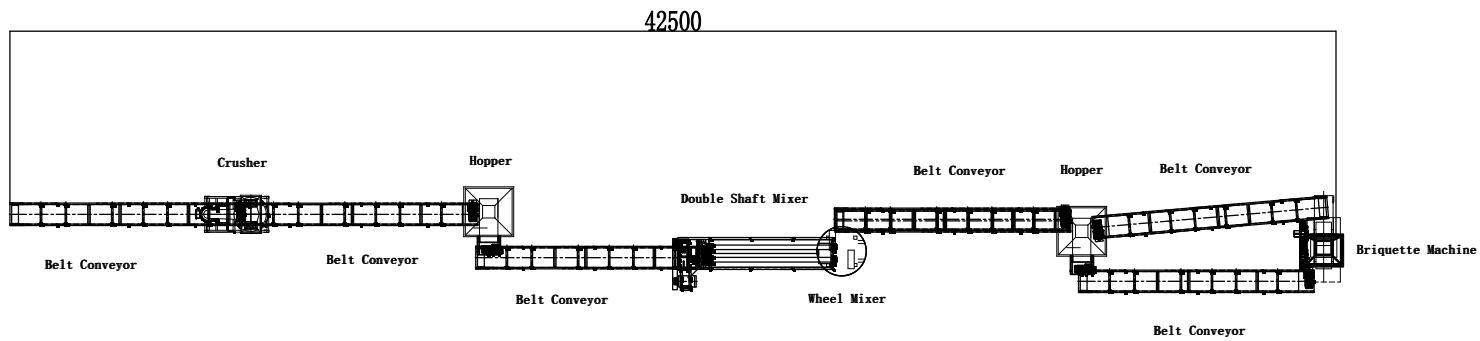
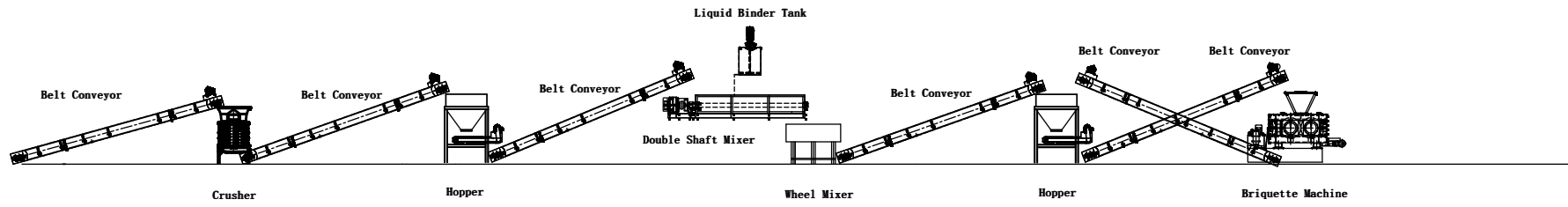
+255763189804

Important Note:

JITEGEMEE HOLDINGS CO LTD reserves the right to accept or reject any or all submissions without assigning any reason thereof. The decision of the selection committee will be final.

Join us in this transformative project that promises to revolutionize coal utilization while contributing to sustainable development goals. Together, let's build a brighter and greener future.

Thank you for your interest and participation.



Carbonization Furnace

30000

65000